

# Ethnography from the Mission Field

*The Hoffmann Collection of Cultural Knowledge*

By

Annie Joubert

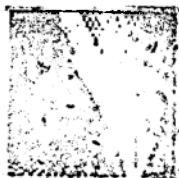
*In collaboration with*

Gerrie Grobler

Inge Kosch

Lize Kriel

Sondersammelgebiet  
Volks- & Völkerkunde  
Zusammenarbeit mit der DFG



BRILL

LEIDEN | BOSTON

# Contents

Preface	XI
Acknowledgements	XIII
List of Contributors	XVI
Summarised Preview	XIX
Documentary Film "A Journey into the Life of a Mission-Ethnographer"	XXII
Database: "Hoffmann Collection of Cultural Knowledge" (HC-CK)	XXIII

## *Introduction*

In and from the Field: A Journey into the Life of a 'Mission-Ethnographer' and His Co-Producers	3
<i>Annekie Joubert</i>	

### PART 1

Historic Contextualisation	15
<i>Lize Kriel</i>	

### PART 2

Corpus of Hoffmann's Ethnographic Articles	75
<i>Gerrie Grobler, Annekie Joubert, Inge Kosch</i>	

## *Rites of Passage*

Article 1 (1913). Engagement and Marriage among the Sotho People in the Woodbush Mountains of the Transvaal—Peeletšo le lenyalo Basothong ba Lebowa ba Dithabeng tša Woodbush go la Transfala 86

Article 2 (1915). The Initiation School of the Sotho People in the Woodbush Mountains of the Transvaal—Koma ya banna ya Basotho ba Lebowa ba Dithabeng tša Woodbush go la Transfala 108

*Folklore: Stories from the Transvaal*

Article 3 (1915). Folktales and Stories of the Natives in Northern Transvaal—Dinonwane le dikanegelo tša Basotho ba Lebowa 158

Article 4 (1916). Folktales and Stories of the Natives in Northern Transvaal—Dinonwane le dikanegelo tša Basotho ba Lebowa 198

Article 5 (1916). Folktales and Stories of the Natives in Northern Transvaal—Dinonwane le dikanegelo tša Basotho ba Lebowa 246

Article 6 (1916). Folktales and Stories of the Natives in Northern Transvaal—Dinonwane le dikanegelo tša Basotho ba Lebowa 298

*Mother and Child*

Article 7 (1928). Sotho Texts from the Woodbush Mountains in the Transvaal—Dingwalwa tša Sesotho tše di tšwago Dithabeng tša Woodbush go la Transfala 352

*Witchcraft, Gods, Prophets, Spirits and Totems*

Article 8 (1928/29). Sotho Texts from the Woodbush Mountains in the Transvaal—Dingwalwa tša Sesotho tše di tšwago Dithabeng tša Woodbush go la Transfala 400

Article 9 (1930/31). Sotho Texts from the Woodbush Mountains in the Transvaal: Totems and Prohibitions—Dingwalwa tša Sesotho tše di tšwago Dithabeng tša Woodbush go la Transfala: Meano le Dikganetšo 466

Article 10 (1931/32). Sotho Texts from the Woodbush Mountains in the Transvaal: Spirits That Are with Some Stones and Other Things and Witchcraft—Dingwalwa tša Sesotho tše di tšwago Dithabeng tša Woodbush go la Transfala: Moya wo o nago le maswika a mangwe le ge e le dilo tše dingwe le boloi 502

Article 11 (1932). Sotho Texts from the Woodbush Mountains in the Transvaal: The Soul in Death and after Death—Dingwalwa tša Sesotho tše di tšwago Dithabeng tša Woodbush go la Transfala: Moya wa motho mohlang wa lehu le ka morago ga lehu 530

### *Land, Laws and Punishment*

Article 12 (1933/34). Sotho Texts from the Woodbush Mountains in the Transvaal: Legal Practices of the Northern Sotho People—Dingwalwa tša Sesotho tše di tšwago Dithabeng tša Woodbush go la Transfala: Tirišo ya melao ya Basotho ba Lebowa 560

Article 13 (1933/34). Sotho Texts from the Woodbush Mountains in the Transvaal: Legal Practices of the Northern Sotho People—Dingwalwa tša Sesotho tše di tšwago Dithabeng tša Woodbush go la Transfala: Tirišo ya melao ya Basotho ba Lebowa 586

Article 14 (1933/34). Sotho Texts from the Woodbush Mountains in the Transvaal: Legal Practices of the Northern Sotho People—Dingwalwa tša Sesotho tše di tšwago Dithabeng tša Woodbush go la Transfala: Tirišo ya melao ya Basotho ba Lebowa 628

Article 15 (1933/34). Sotho Texts from the Woodbush Mountains in the Transvaal: Legal Practices of the Northern Sotho People—Dingwalwa tša Sesotho tše di tšwago Dithabeng tša Woodbush go la Transfala: Tirišo ya melao ya Basotho ba Lebowa 666

### *People, Politics and Government*

Article 16 (1937/38). Sotho Texts from the Woodbush Mountains in the Transvaal: Political Organisation—Dingwalwa tša Sesotho tše di tšwago Dithabeng tša Woodbush go la Transfala: Peakanyo ya borerapušo 698

Article 17 (1937/38). Sotho Texts from the Woodbush Mountains in the Transvaal: Political Organisation—Dingwalwa tša Sesotho tše di tšwago Dithabeng tša Woodbush go la Transfala: Peakanyo ya borerapušo 760

Article 18 (1937/38). Sotho Texts from the Woodbush Mountains in the Transvaal: Political Organisation—Dingwalwa tša Sesotho tše di tšwago Dithabeng tša Woodbush go la Transfala: Peakanyo ya borerapušo 786

### *Home, Habits and Conduct*

Article 19 (1956). Customs and Traditions of the Sotho People in Northern Transvaal—Mekgwa le botlwaelo bja Basotho ba Transfala-Lebowa 832

Article 20 (1956). Customs and Traditions of the Sotho People in Northern Transvaal—Mekgwa le botlwaelo bja Basotho ba Transfala-Lebowa 854

Article 21 (1957). Customs and Traditions of the Sotho People in Northern Transvaal—Mekgwa le botlwaelo bja Basotho ba Transfala-Lebowa 898

Article 22 (1957). Customs and Traditions of the Sotho People in Northern Transvaal—Mekgwa le botlwaelo bja Basotho ba Transfala-Lebowa 940

Article 23 (1958). Customs and Traditions of the Sotho People in Northern Transvaal—Mekgwa le botlwaelo bja Basotho ba Transfala-Lebowa 976

Article 24 (1958). Customs and Traditions of the Sotho People in Northern Transvaal—Mekgwa le botlwaelo bja Basotho ba Transfala-Lebowa 1006

### *Obituary*

In Remembrance of Missionary C. Hoffmann (1963) 1045

*E. Kähler-Meyer*

### PART 3

Orthographic Developments and Grammatical Observations 1049

*Inge Kosch*

*Appendix*

**Maps, Drawings and Photos** 1087

**References** 1121

**Index of Subjects, Names and Places** 1128

**Index of Northern Sotho Terms, Names and Phrases** 1132

**Reverse Index (English-Northern Sotho)** 1141